



Graduate Women WA

Graduate Women (WA) Inc.



Dux Femina Facit

Newsletter

October 2012

Volume 50 Number No 4



Published by Graduate Women (WA) Inc

Address: Graduate Women (WA)

PO Box 48 Nedlands 6909

Ph: (08) 9386 3570

Email: gwwa@westnet.com.au

Editor: Jenny Jones



BE PART OF OUR HISTORY

Graduate Women (W.A.) 1923 - 2013

AGM Tuesday 23rd October – 6.30pm

INVITATION TO THIS CHAMPAGNE EVENT

After a short AGM we will announce an exciting year of events and unveil our logo and commemorative lapel badge.

This year's bursary winners will be announced and presented to members.



Come and help us celebrate the launch of the

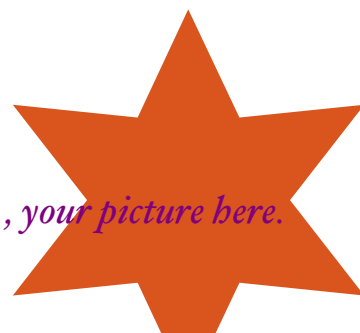


90th Anniversary Year

We look forward to seeing you as an important part of our history and our future.



Her picture here , your picture here.



CONTENTS

Your Invitation to our AGM Party	2
President's Report	4
Treasurer's Report	6
CIR Report	8
(Acting) Secretary's Report	9
Galle Pre-School Report	10
Galle Pre-School Architectural Plan	12
Annual Editorial	13
House Committee	14
Gown Committee	14
Thursday Bookclub	14
Poetry Club Report	15
Saturday Bookclub	15
St Catherine's Report (Part 1)	16
St Catherine's Report (Part 2)	16
Graduate Women (WA) Inc AGM 2011 Minutes	17
AFUW(WA) Inc Education Trust Report 2012	20
AFUW(WA) Inc Education Trust AGM 2011 Minutes	
Graduate Women (WA) Inc Committee Nomination Form	23
AGM Order of Proceedings	24

PRESIDENTS REPORT



This year has provided a springboard of opportunities for Graduate Women (WA). The committee has been working proactively and innovatively, reviewing the role of the organisation within the national structure, its financial strengths and stability and opportunities to expand the membership and allow members to be involved socially as well as making a valuable contribution to the success of our projects. We are a pivotal women's group as part of the national association and within the educational sphere of Western Australia. All of which is possible because of the cohesive and knowledgeable group of women who have taken on responsibilities within the organisation and met those responsibilities and more. And it means we are moving into our 90th year celebrations in 2013 with vigour and a splash.

Our splash is providing five \$5000 scholarships for 2013 – a scholarship to each university in WA above and beyond our normal prizes and bursaries/scholarships. This significant and generous contribution is possible because our current gown convenor, Wendy McCallum, and those fulfilling this role in the past, together with Karen Bothwell and a band of volunteers, have continued to provide us with a sizeable fundraising income.

There will also be many events during 2013 where we can focus on the success of our many achievements. Our 90th year convenor, Hilary Silbert, has worked to prepare an exciting calendar, and I urge members to be part of celebrations.

And this next 'historic' year will close with the publication of our own history. Our 'history crew', Barbara Hale, Wendy McCallum and Lynda Roberts Hall are in the final stages of writing and investigating the cost and method of publishing. A labour of love and again we are fortunate to have members with the required skills.

With the AGM near, it is worth taking the time to remind members of the areas of interest of the different committee members, to thank them for their hard work and many long hours, and to project a little into the future.

Of significant importance is the work of our financial whizz and Treasurer, Alison Hayden who also represents us on the AFUW(WA) Education Trust. Alison has held this position since 2009 and I am sure members recognise how important it is to have such a competent person in charge of financial matters. Alison has also been in charge of the website, including the setup of our new site.

The name change for our association from AFUW(WA) to Graduate Women (WA) Inc created a significant amount of work involving a close review of the constitution. Margaret Giles, now immediate past president, has finalised this document and seen it safely through the hands of the bureaucrats.

Margaret also represented us on the International Women's Day breakfast consortium, a role which she will pass across for next year to Vice President, Lalani Weddikkara, while Margaret herself will provide assistance to Alison. Some of you will recall that Margaret is immediate (acting) past Treasurer as well as immediate past President. (But we will find plenty for her to do in the future!) Lalani will continue to promote one of our major projects, that of establishing a preschool in Galle, Sri Lanka. The official opening is planned for July 2013.

Lynda Roberts Hall has rallied often to provide her eloquent expertise on many issues as CIR and also as the Membership Convenor. We are proud to announce that we have nominated her as the national CIR at November Conference. We have had Lynda's expertise available to generate opportunities of public praise, such as the nomination of Roberta Jull for the IWD Women's Hall of Fame, nominations of members Barbara Hale and Dorothy Collin for Volunteers Day and we hope that she will continue to stimulate the committee with her ideas.

Wendy McCallum and Karen continue to gird themselves for the bi-annual graduations, which while providing a good financial return, require many hours of physical work and office management. Any small assistance that members can give in terms of their time means a lot, and I urge those who are able to help us

preserve this income. In 2012 we commenced talks with UWA regarding graduate gown hire with their new degree courses. We will continue these talks into 2013.

And Wendy's name comes up, again, as she is also instrumental in the maintenance of our other asset, the building that comprises, on the ground floor our office, and above, a unit that is leased out.

We welcomed younger members Kate McCallum, Esmeralda Rocha and Patricia Alessi onto the committee this year, and we look forward to their continued support and are working on the idea of forming a young members group. Esmeralda Rocha and Patricia Alessi took on responsibilities involving the scholarships and bursaries and extending our postgraduate presence. Kate provided valuable backup when Karen was on holidays, keeping the office routine going.

Having a (Acting) Secretary, Jenny Jones, filling a position that was vacant for some time, has also been a bonus to us. Jenny worked with Alison on the webpage, is planning to work with Karen to streamline committee procedures and is also our newsletter editor.

Sally Male has been our representative on the UWA Centenary Trust for Women, and Ruth Taylor, took on the role of our representative on the St Catherine's College Council when Hilary Silbert finished her six year term at the beginning of 2012. Thank you Sally and Ruth for your reports and for providing an on-going link with these traditional partners.

Vice President, Jenni Antulov, held the important post of Education Convenor and I thank her for her contribution on educational issues.

We have been fortunate to have once again as Scholarship and Bursary Chair Joan Wardrop. The assessors have submitted the successful 2013 applicants and they are being notified as I write. The traditional winners evening of 2011 winners was enthusiastically received in May this year, and will be repeated in 2013 when the new group of scholars are invited back to inform us of what they achieved with the scholarship/bursary support. I also extend thanks, on behalf of all members, to the Trustees and to the Chair, Robyn Carroll, who I have found dedicated and always willing to discuss issues relating to the Association and Trust.

What a year ...and those of us that make it to the Triennial Conference in November will be going to vote on the proposed radical change to our national association and major constitutional amendments – that is if we cannot guide the AFGW to an understanding of the relevance of the current structure in maintaining grassroots interaction. This has been a turbulent year on the national scene with major submissions from Graduate Women (WA) and many emails and phone calls. In all this Jocelyn Eskdale, the National Resolutions Convenor is to be thanked for her time and patience. As an STA we have nominated Lynda Roberts Hall as national CIR and Madeleine Laming as President and Kathy Mumford, a member residing in Tasmania as Registrar, both under the current national structure. The national Triennial Conference and Council Meeting are to be held in Brisbane from the 22-25 November. Six members from Graduate Women WA will attend, myself as President, Lalani Weddikkara, Jenny Jones, Lynda Roberts Hall, Wendy McCallum as well as one of our newest members, recently the President of the Victorian STA, Madeleine Laming.

I cannot let the year go by without a special vote of thanks to Karen Bothwell, our Executive Officer. I am indebted in this my first year as President, for her support and expertise. We are incredibly fortunate to have Karen, and I thank her for her patience, her understanding and her ability to ensure the day to day operation of our association functions so successfully, especially through the myriad gown hire requirements. Karen, many thanks for your help in 2012.

Finally, our 90th year commences as we vote in our new committee in a few weeks time. From the early beginnings of tertiary women staff providing support to each other in the fledgling University of WA wooden buildings in Irwin Street Perth an impressive array of women have been assisted in their academic endeavours. We are proud to have some of them in our membership ranks. Let us remember our past members and celebrate – we have been left a fortunate legacy and we will continue to honour that legacy by supporting the education of women at all levels.

Felicity Farrelly
President

I do not have the audited financial reports as I write this outline of activities. So my comments are limited to the information I have available as at the date of the newsletter.

Academic Gown Hire

It is pleasing to be able to report that the hire of academic regalia grossed \$94,000 over the 2011-2012 financial year. The amount of work that goes into organising the hiring out of the gowns is significant and we would not be able to maintain this level of activity without the help of Karen Bothwell, Wendy McCallum and Kate McCallum. Thanks must also go to the numerous volunteers who support this work.

Expenses allocated to Academic Gown hire totalled approximately \$37,000 plus payment of the donations to The Trust (\$17,000), the St Catherine's scholarships (\$4,000) plus \$1634 for other educational support purposes.

Some of the main expenses allocated to Academic Gown hire include Salaries/superannuation \$19064, direct gown hire expenses \$4729, Insurance \$2943, Merchant fees (use of Eftpos) \$1145, Accountancy fees \$2655, Rates \$1405, photocopier leasing \$1401.

I don't have the figures available for depreciation of the gowns or taxation payable as yet.

Rental Income

Rental income for the financial year amounted to \$23884. At the present we are receiving weekly rental income of \$460. Expenses allocated to the rental property total \$9715. This does not include the tax payable on the income or depreciation of fittings.

Members

Income amounted to \$15563. This amount is made up as follows;

Income	
Donations	\$285.00
Social Functions	\$6,216.36
Subscriptions	\$5,045.55
Bursary Application Fees	\$354.54
On line saver interest	\$3,153.31
ANZ Term Dep Interest	\$508.97
Total Income	\$15,563.73

Expenses associated with the running of the association amounted to \$29,850. The main expenses being Wages/superannuation \$8780, Accounting fees \$1593, Social function expenses \$5996, Capitation fees \$3375, Rates and taxes \$1404, Insurance \$1409.

Unfortunately I cannot provide a final profit figure at this point in time as I don't have information on depreciation for the year or taxation for the year.

The auditor's report and Income statement and Balance Sheet will be available at the meeting.

AUDIT FOR 2012-2013

In view of the proposed introduction of the new ACNC package of bills, which are presently being debated in the Senate, the committee is seeking quotes/estimates for undertaking the audit for the 2012-2013 year. Quotes/estimates have been requested from Somes Cooke, our current auditors and Dry Kirkness, an Accounting firm with particular expertise in the not-for-profit sector. I hope to have replies from both firms for presentation to members at the AGM so that due consideration can be given to the appointment of auditors for the 2012-2013 financial year.

The ACNC refers to Australian Charities and Not-for-profits Commission. Legislation covering the operation and powers of this new commission has passed through the House of Representatives and is now with the Senate for debate.

A brief outline of effects of the ACNC legislation is shown below;

- *"The reform package is intended to create a single, streamlined regulatory and reporting frame work for the not-for-profit sector. The reforms also aim to improve the transparency and accountability of the sector.*
- *The reforms are intended to achieve this by:*
- *Establishing the Australian Charities and Not for Profit Commission ("ACNC") and an Advisory Board*
- *Giving the ACNC the job of maintaining a national register of not-for-profit entities*
- *Giving powers to the ACNC to regulate the registered not-for-profit entities*
- *Setting out the obligations of registered not-for-profit entities (and, in particular, reporting obligations and minimum governance standards).*

In the first stage, expected to commence on 1 October 2012, the ACNC will be established and all currently tax endorsed charities will be automatically registered.....

In the second stage, the minimum governance standards and reporting obligations for registered entities will be introduced. The governance standards are expected to apply from 1 July 2013 and the reporting obligations are expected to commence in the financial year beginning 1 July 2014.....

Because of the staged approach, and because much of the detail of the obligations that not-for-profit entities will have to meet has not yet been drafted, significant questions remain about how the reforms will affect the not-for-profit sector....."

As members of Graduate Women, our subscriptions cover a subscription to the National Association, Australian Federation of Graduate Women and the International Association, International Federation of Graduate Women. Thus we belong to three Associations in all and our work is carried out at both a local, national and international level.

As CIR, my role is to support the National CIR, Dalma Jacobs by providing her with a link to distribute relevant information to members, to consult and provide feedback on IFUW matters as requested, to promote IFUW and to provide support to the CIR for international matters. On a purely social level that means that I also serve to be a contact for international members who may be travelling through WA and want to meet up with other members.

The CIR ensures that all State CIRs are kept abreast of relevant matters and information. However, this also requires keeping abreast of information from IFUW through participation in forums, discussion boards and subscribing to updates. This takes some time to come to grips with what happens at the International Level.

Over the past year, this has translated into the following actions/initiatives:

1. Consulting with and seeking feedback from WA members about the following IFUW matters that required NFA endorsement:
 - a. Acceptance of the IFUW Financial Reports for 2010-2011
 - b. Whether Australia should vote to accept an application by Niger into IFUW (yes Niger and not Nigeria) – we said yes
2. Promoting IFUW news and opportunities for WA Members via enews.
3. Bringing to the attention of the Committee matters of relevance to the membership for information and/or action, eg. IFUW Online Discussion Summary on Maternal Health, Parental Leave and Childcare, Information that the UN General Assembly adopted the UN Declaration on Human Rights Education and Training (HRET) in December 2011, IFUW Day, IFUW re-structure considerations, proposed scholarships, IFUW Online Discussion on Violence Against Women and Girls, IFUW President's Initiative.
4. Providing feedback to the CIR on:
 - a. the Role of the CIR – this was circulated to all National and Federal Associations with a view to having a common understanding and expectation of the role
 - b. The IFUW Strategic Plan and also where AFGW and Graduate Women WA can support various objectives
 - c. Information as requested for various reports that are fed back to Council or IFUW.
 - d. STA action in relation to IFUW objectives
5. Working on a resolution about access to education for Afghanistan women and girls that can be presented by AFGW at the IFUW Conference in 2013 – this is a work in progress
6. Agreeing to be the AFGW representative for the IFUW President's Initiative on involvement in the Beyond 2015 Development Agenda. Her challenge is a concentrated involvement across all NFAs with a key link person in each NFA. This is the start of a work in progress over the next two years or so.

This year, we celebrated IFUW Day on Friday 1st June by having an Afternoon Tea at Edith Cowan University (Joondalup Campus) to celebrate IFUW Day, to promote the association and to introduce their 2012 Awards, which were worth a total of \$21,000 in 2012. Apart from promoting the 2012 Scholarships, attendees heard about the special scholarships being planned for 2013 when Graduate Women (WA) Inc would be celebrating their 90th birthday. 15 post-graduate research students, ECU staff and members attended. IFUW Day was a new IFUW initiative and most other STA/s held some function in honour of the day, as did many other National or Federal Associations. Margaret Giles did an excellent job in organising the event.

Coming up in the 2012-2013 term, we will be seeing more action on the IFUW front, as we prepare for the IFUW Conference in Istanbul next year. AFGW will be required to submit various reports of activities and actions over the last triennium, to put forth nominations for IFUW positions (Council and Committees) and to consider and

endorse resolutions for Action and Advocacy. There will be a delegation from Australia who will attend the conference in 2013. From an STA point of view, this will mean input and information will be required for various reports. There will also be opportunities for members to participate at IFUW. In the past, we have had many notable members involved at IFUW – for example Dr Dorothy Collin and Zelinda Bafle on the International Fellowships Committee and the Finance Committee respectively.

As mentioned above, we are also entering into the next stage of the Millenium Development Goals with the Beyond 2015 framework and the IFUW President's challenge that we become involved in promoting our objectives through participation in country consultations. There will be more information about this coming through over the next year. Again this will give members great opportunities to shape the world and it's direction.

Whilst we have struggled with membership numbers at the state and national levels, this has also occurred at the international level and IFUW has been undertaking due diligence into cost cutting measures and structure, given declining membership pressures. They are also embracing ways in which membership can be increased – so the focus is on membership attraction and retention, not just on fiscal reduction. New initiatives and new ways of thinking are very much evident.

As always, I encourage all members to visit the IFUW web-site and to participate in various forums. I have greatly enjoyed the opportunity to take on this role and I have been very fortunate in having great mentoring from Dalma Jacobs.

Acting-Secretary's Report

Jenny Jones

The position of Secretary with the Committee was vacant before I nominated in 2011 to take on the position. Because of members' concerns that it was inappropriate to hold more than one position on committee, I have therefore been 'acting' in this capacity, with the responsibilities of Secretary fulfilled by either the Executive Officer Karen Bothwell or by myself as the need arose.

This gave me a very easy lead-in to committee life, absorbing some of the workload little by little as I began to understand the role better, and as the year got busier. It also gave me a chance to absorb the content of the Committee Handbook which gives an outline of each position:

SECRETARY (Role as established in the handbook)

- Primarily a role of governance
- Arranges a Meeting Schedule for the Committee and Special and Annual General Meetings. This includes determining meeting venues and liaising with guest speakers.
- Working with the Membership Convenor and the Executive Officer, ensures adequate recording of memberships and that members are kept informed of relevant information.
- Coordinate the Annual General Meeting Report in liaison with the President, Executive Officer and the Newsletter Editor. This includes the coordination of the receipt of the Committee reports for inclusion in the Association's Annual Report prior to the AGM.
- Attend to correspondence of the Association with the President.
- Ensure an annual self-audit of the association is undertaken ensuring insurance and other responsibilities are dealt with promptly and appropriately.
- Ensure minutes for the Association are kept up-to-date. This may include taking and preparing minutes as required.

For those interested, a complete review of Western Australia legislation and the management issues within an Incorporated Association, information can be found at the following web address:

It was serendipitous that I also took on the role of newsletter editor, as the two roles are aligned in many ways.

But another convenient fact is that my expertise is a complex mixture of computer skills, documentation skills, and system organization. This has allowed me to take on the relevant tasks confidently, but also to see ways to improve the efficiency of some of the systems, and this is my aim over the next year. I hope to be ably assisted in this task by our Executive Officer and Regalia Hire Manager, Karen Bothwell, who has by default, taken up the slack left when the office of Secretary was vacated.

Governance of any community not-for-profit organization is becoming more and more onerous as the Government controls and supervision continue to intrude on the day to day operation. These require time that often does little to improve the actual running or outcomes of the Association. Despite our 'low profile' and an inherent belief in the goodwill of our members, committee responsibility is daunting because of legal concerns of responsibility. As times change, it may prove useful to budgeting for the provision of training/professional development for committee members.

However, even by just improving guidelines and documentation it will be easier to ensure that all committee members are confident in their ability to continue to work in the best interests of the Association without the anxiety of breaching government rules and policies.

To summarise I hope to be able to report to the committee on the pluses and minuses of its governance of GWWA, and to be able to suggest approaches to remedying areas where I perceive inadequacies:

- To review the methodology and efficiency of the current office and committee procedures
- To establish (where required) and document those practices that are recognised by the committee to be 'best practice'
- To put in to practice (after review) the draft archiving system which is awaiting systematic application.

Pre-School (Sudarshana) at Weliwatta Galle Sri Lanka

Sri Lanka is a nation that is proud of its literacy rate, and images of white uniform clad students are a familiar sight around the island. Therefore the damage by the tsunami to schools across the coastal belt was a tragedy, to both parents and students in the affected regions.

182 Schools between Galle & Hikkaduwa were damaged by the tsunami in the South. 102 schools and 9 vocational institutes were identified for relocation, as they are situated close to the sea (TAFREN news update, 2005, July 10th). It was reported that 65% of children were lost to the tsunami in the south. Our friend Fr. Patrick Fernando worked in this area, and knew the area well. He informed us that a Pre-School was needed for this area. This is when my family decided to help with a Pre-School for the children of the area, away from the sea.

We started with small beginnings, by renting a house to start a Pre-School, with 1 qualified teacher who was Asanka, 1 cook and 22 children. We had to move a few times as the owners wanted to rent the house for a higher amount than we could afford to pay.

On one of my visits to Sri Lanka, I took exercise books, pencils and pens donated by members of Graduate Women (WA) formally Australian Federation of University Women (WA). Some members of the Australian Federation of University Women(WA) helped with the repair of boats to get the livelihoods of the Fishermen going. They helped set up play equipment for the Pre-School by a very generous gift of AUD \$1000.00.

The Southern Tsunami Trust, established by the Anglican Church of Sri Lanka, helped the people of this area, as they saw a great need for the establishment of a Pre-School. The School was opened in 2005 with the help of St. Michael's Mt Pleasant and Curtin University Library staff. St. Michael's Mt. Pleasant started by collecting coins into a bowl each Sunday. This practice continues even today.

St. Michael's Parish started by supplying AUD \$300 a month, to pay for the teachers wages and giving the children a cup of milk as they arrive and a meal just before they went home, as the parents or the carers couldn't afford to give them two meals a day.

Now, St. Michael's Mt. Pleasant send AUD\$ 400 a month for salaries for Asanka who is the head teacher & 2 qualified teachers & 1 Cook. There are 48 children at the moment attending this Pre-School, and a long waiting list for next year. This year they had to turn away many children due to lack of space.

The new Pre-School building work has started and it will be finished by the end of this year. We hope to celebrate the opening of the Pre-School in July next year, as it's the time we take a group of people from Perth to see the country, as well as see the work we do in Southern Sri Lanka with the women as we help them with their livelihoods, and see the children at the Pre-school.

In 2011 my husband Ranjith and I bought the land adjoining the existing Pre-School. With your help & the help of St. Michael's Mt. Pleasant parishioners, and generous donations from friends and relatives, we will complete the building of the new Pre School by the start of next year.

The Graduate Women W.A formerly The Australian Federation of University Women WA, members helped from 2007. In 2009 they decided that the Pre-School fits with our mission statement.

Asanka, continues as the head teacher. By giving Asanka a scholarship which paid for her air fare from Sri Lanka to Perth and back home, the Graduate Women WA, not only helped her come to Perth for a very worthwhile course conducted by Dr. Dawn Butterworth, President of OMEP WA (Organisation Mondiale pour l' Education Prescolaire Western Australia). The Principle object of OMEP WA is to provide direct relief of poverty, sickness, abuse, suffering or other forms of misfortune suffered by children. The objects of OMEP WA is to raise awareness and educate parents, carers and communities on high quality early education and care, to encourage study, research and advocacy related to early childhood education and care; and facilitate understanding of the needs of early childhood.

Asanka, lived at our home and I was able to take her to a whirlwind of seminars, workshops, school visits, excursions and hospitality which was a great success. On the last day morning tea was hosted by the Minister for Child protection, the Hon. Robyn McSweeney at Frazer's Restaurant, king's Park, where she presented the teachers with their achievement certificates, which we have since heard that it greatly impressed the Oro Provincial education department Officers as well as the Sri Lankan Education Department.

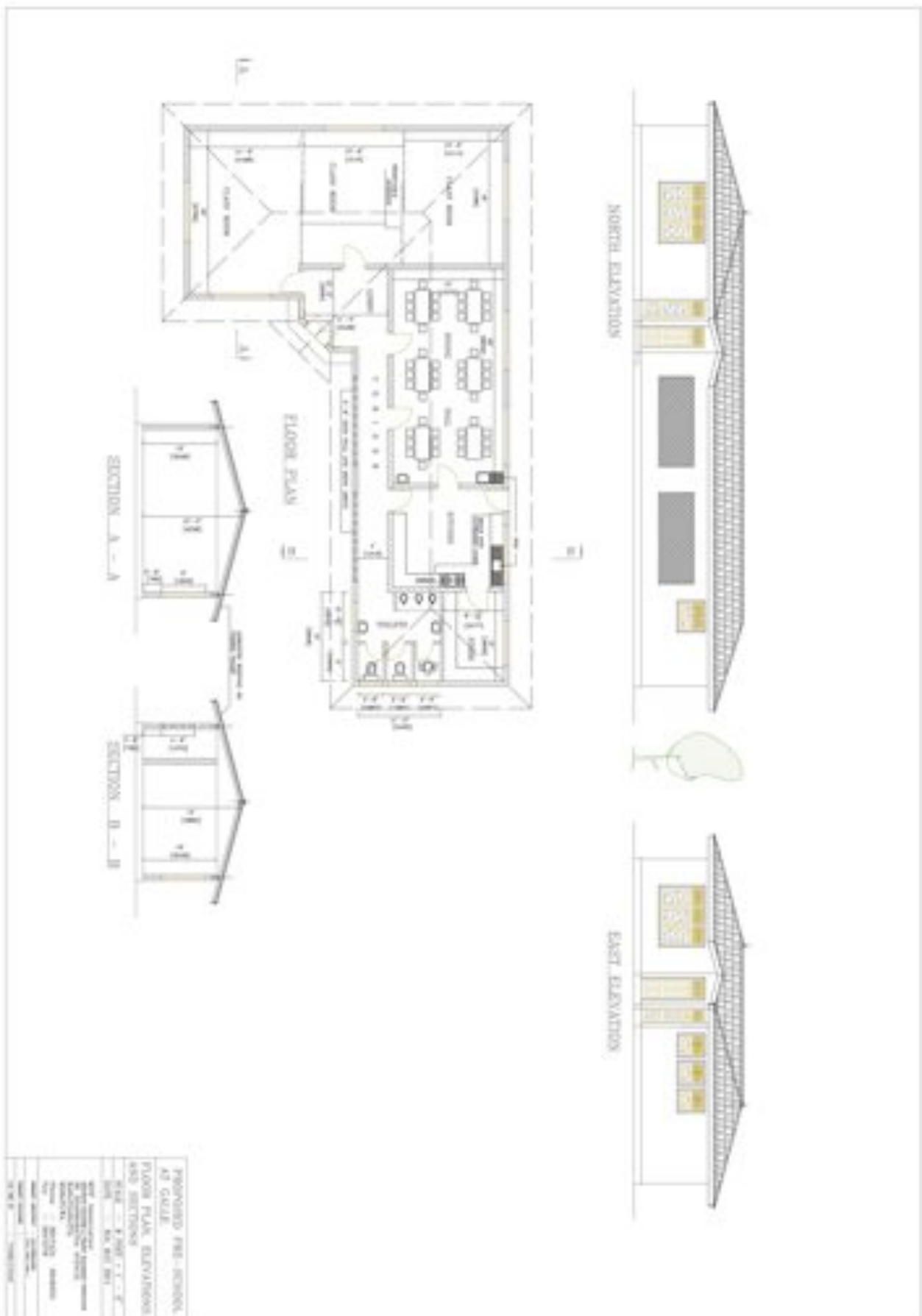
A Sri Lankan Butterfly banquet, organized by myself and friends on the 14th of April for the Papua New Guinea teacher's and Asanka from Sri Lanka was also a joyous farewell function for them. Over 100 people attended the Sri Lankan banquet at St.Michael's Church Hall Mt.Pleasant, and we collected over AUD \$ 5,550.00 which was shared between the PNG School in Popendetta and the Pre-School in Galle, Sri Lanka.

Asanka informed me how much she enjoyed her stay in Perth and how much the education programme has helped the Pre School students with a better education, as she learnt new methods of teaching, as well as how to use new resources.

For further information about the Pre-School and other work we do in the South of Sri Lanka with women and children, please contact me at lalaniw@q-net.net.au.

Thanks, Lalani Weddikkara

See plan of PreSchool Below:



Editing the newsletter has been an engrossing experience and something of a learning curve! A big THANK YOU therefore to Susan Dunn for her much appreciated help with the first editions of the year as I was finding my feet.

Thank you also to the many contributors for reports, photos and other material. And where errors and omissions made me wish I'd never taken on the job, my heartfelt thanks to those who were gracious in their manner of correcting my blunders.

One really enjoyable thing about doing the newsletter is the way it enables me to meet not only members, but also our guests who come to the various functions and the diverse group of scholarship and bursary winners. I do find it a joy to see the excitement these women have in their academic challenges and I am rewarded by how my sense of the importance of the work of Graduate Women is reinforced.

And thank you also to those who have given me feedback and ideas. Now, with the majority of newsletters sent by email, and with larger files being able to be downloaded quite quickly as processor speed improves, I have been able to add more photographic interest to the newsletter with very little additional cost.

With this in mind, I would love to get a photo and a few sentences (current academic and personal interests) from members so that I can create a 'members album' section. I hope to start with the committee in our first 2013 edition.

2013 is, of course, our 90th anniversary, and the committee has got plenty of opportunities in store for my pen and my camera! And while the newsletter is a way for members to know what the committee has been doing and what's on the calendar, president Felicity Farrelly and the rest of the committee see feedback from members as equally important.

So it's renovate and rejuvenate time. Graduate Women (WA) Inc Newsletter Vol 51 No 1 is looking for members' contributions. Letters, film reviews, book reviews, travel highlights, essays or poems can be sent via the office for publication. In particular I would be interested in any papers or articles which might be of interest to other members, and which reflect the goals of our association. They could have been written by you or colleagues or acquaintances, or indeed have appeared in journals. I am happy to seek permission to reprint the article, or to direct members to the source. Some of you may have student papers of interest that we could seek permission to use.

And why not, to start, a controversial suggestion for Letters to the Editor: Should the newsletter get a 'magazine' style name, and if so what? And you don't get a prize for 'The Old Lady of Park Rd'. I might consider 'Blue Stocking', though! Best suggestion/repudiation gets a free copy of our soon to be published History.

We have been fortunate that at the end of their lease in December our tenants re-signed for another 12 months and the rent was increased by \$10 to \$460 per week. Shellabears are our agents and we have been happy with their service over a number of years. A few minor maintenance jobs have been done, such as replacing the outside security light. The flat continues to provide us with a regular income.

During the long weekend in June we had a working bee at which Felicity Farrelly, Kay Wright and Wendy McCallum did a lot of work in the garden. Felicity pruned creating quite a pile of greenery to be removed. Kay had purchased native plants and she and Wendy planted them. Weeds were attacked in the gardens and driveways and courtyards sprayed. Finally the yard was raked and the paths swept, keeping the Headquarters looking tidy.

Wendy cleaned the carpets after the April graduations.

The reticulation was inspected and it was found that the control box needed replacement and this was done.

Jenny Jones and Wendy McCallum as members of the House Committee would welcome another member who would like to help maintain our building.

Academic Dress Report 2012

Wendy McCallum

This past year Academic Gown Hire has once again proved to be very successful. In September 2011, 5 graduations were held and we hired out to 518 students. During March/April 2012 there were 10 graduation ceremonies and 1021 students hired their regalia from us. This success is due to a lot of hard work by Karen Bothwell and also Kate McCallum who stepped in during Karen's leave. However, they could not do it on their own and we are very grateful to the core group of members who contribute their time and expertise at each graduation. Thank you very much to those members who wrote receipts, ironed hoods, mended tags and helped dress each of the excited and happy students. As many of these members are reaching 'grand ages' it is imperative for the continued success that many more members become involved.

This past year has seen no big purchases as we are still waiting for the University to confirm the changes they are making to both the courses and regalia.



Left: Wendy McCallum and Karen Bothwell in the office



Right: Current convenor Wendy, with previous gown convenor Joy Anderson

Thursday Bookclub 2012

Wendy McCallum

This year I have been travelling and have not attended all meetings. However, our dedicated members have continued to read and discuss books of their choice. The discussions have been stimulating and members have enjoyed reading more widely. We are always happy to welcome new members.

We are a small group of retired members which meets one morning a month to read and discuss poetry. Unfortunately this year we have had to cancel two meetings because of sickness or members' travelling commitments.

It is with sadness that we record the loss of Val Casey who was a regular participant in our discussions from the inauguration of the group.

Our choice of poets and themes can be quite eclectic; for example last month we discussed the life and poetry of Dylan Thomas and next time we expect to read William Cowper. We have been fortunate in being able to listen to CD's of poets reading their own poems.

Why not join us and discover the magic and rhythm of words.

Saturday Bookclub 2012

Jenny Jones

The AFUW Saturday Afternoon Bookclub meets on the 4th Saturday of every calendar month from February to November, with a Christmas lunch instead of a meeting in December. Meetings are held at the Park Rd offices of the Federation between 2 pm and 4pm, when we devote at least an hour to books before enjoying the afternoon tea provided by members on a rotation basis.

We have had six regular readers for most of the year: Beth Bake, Rose Carter, Rhoda Chance, Helen Charlesworth, Trish Hashim, and Jenny Jones. Marjan Oxley has resigned, having taken up some other projects, but we have had the pleasure of input from Madeleine Laming who has taken up an appointment at Murdoch University and has recently joined us. Unfortunately one of our dyed-in-the-wool readers, Beth Bake, is struggling with some medical issues at the moment. We miss her reflections, wish her well and hope that she will be able to join us again next year.

We choose our reading list for the following year in October/November. This process is problematic because we all have so many books still waiting to be read, and does anyone's reading list ever grow shorter? Our aim, however, is simple; to ensure a reading list that is diverse and which provide us with the opportunity for some 'meaty' discussion. So now is time to come along and have a say about the reading for 2013.

Usually the presenter will give the group background information about the author, the 'background' of the book or novel, a summary of different reviews and a closer look at some passages that highlight the flavour of the month's reading. Everyone has an opportunity to give their opinion of the way the book was written, and how they responded to it.

Finding out background information about authors and the 'genesis' of the book, as well more detailed information of, for example, the geography or history of the setting, or the politics and social mores of the period, enhances every reading experience. In our bookclub these background insights are prepared by the member who is acting as discussion leader for a particular month. The information is shared with the group, along with any other aspects of the writing that are of interest. Then there is a general discussion of convergent and divergent views.

One month this year we have enjoyed combining the bookclub meeting with a tour of an exhibition at the Lawrence Wilson Art Gallery at UWA, and these kinds of activities are ones that allow us to catch up with ex-members.

For anyone interested in joining us, my contact details are: Jenny Jones
9386 3053
jonesfam2@yahoo.com

Tuesday April 17th 2012 marked the final meeting of St Catherine's College Council that I would attend as the representative of Graduate Women WA. This was the conclusion of six years as the representative and in fact, I saw many changes. Over that period of time – equivalent to two, three year terms - I served under two Chairs of Council, was Secretary for the last year, had meetings increase from every three months to every two months, attended extra meetings involving future plans for the accommodation at the College and watched the Graduate Women WA scholarship prize money increase in value. I was also privileged to be part of the selection process for the annual scholarships offered at the College.

One of the highlights for me over that time was the occasions when I would present the successful student winner with the GWWA scholarship. It was always a pleasure to meet them and stay in touch on other occasions. Members had the opportunity to learn more about them through their published biographies in our newsletter and website and when they attended events. I was delighted when we became visible at the College after a long and significant history with St Catherine's, when we unveiled our own honour board of scholarship winners. This is hung in the College Dining Hall and is the only outside organisational honour board.

The six years involved my attending numerous presentations and discussions about the future of St Catherine's College and the need to expand, and culminated in a successful application to NRAS (National Affordability Accommodation Scheme). I hope I am invited to the opening of the very beautiful building on Park Road that will be completed next year!

I will miss my time meeting with the students and attending the wonderful functions such as Commencement Night, Valedictory Dinner, Academic Dinner and St Catherine's Day Dinner. In fact my last event there was to view a mock up of a future bedroom in the new building – superb - followed by a delicious breakfast.

I am delighted that Ruth Taylor is the GW WA representative and that she will be involved in the transition period of the College. I thank Graduate Women for the opportunity to serve on St Catherine's College Council.

Hilary Silbert

Graduate Women WA representative 2006 – 2012

As acknowledged in Hilary Silbert's report above, I commenced as GWWA representative on St Catherine's College Council following six years of active service by Hilary Silbert. As an Akaterine (St Catherine's alumni) and a past president of Graduate Women, I am looking forward to further developing the nexus between GWWA and St Catherine's via this role.

The focus of College this semester is the major **building construction** works commencing in October 2012 with aim to open February 2014.

St Catherine's College was the recipient of an **Outstanding Contribution to Student Learning Award** from UWA. The college was the first residential college to be awarded this accolade, and demonstrates excellence in terms of College programs, and support of student achievements.

To support further support strategic vision, College has employed **Craig Knight as their Marketing manager**. Craig is activity developing the alumni database and has currently over 3000 entries and would like to hear from any GW members (and their friends etc) who are former St Catherine's students to provide or update their details, contact Craig on 9442 0400 or email details enquiries@stcatherines.uwa.edu.au Jenn Engelhard is organising a **reunion** for early November – details to follow about this chance to catch up with the former residents of St Catherine's. FMC have been contracted to assist with a **fundraising strategy** for College. Areas to consider include the provision of scholarships, building funds etc.

Fiona Crowe, Head of College, is actively involved with affiliated colleges in the delivery of Risklink, an online system to address **workplace health and safety** legislation and ensure best practice along College Row.

Faculty Night is an annual event where students invite their 'favourite' professor/lecturer to dinner at College and provides the opportunity to showcase College - an informative Powerpoint presentation by Fiona Crowe, HoC, also included AFUW/GW historical links and scholarships. The local MLA Bill Marmion provided a cheque to support students, and UWA Chancellor Michael Chaney encapsulated the interface and value of residential colleges for UWA, and the success of the evening in his closing speech.

The **Boston Consulting Group** ran information session for students from St Catherine's and St Georges in August, having identified these as the colleges with the best track record for excellence.

Sporting, Social and Cultural Activities

Semester 2 has been very busy with a number of intercollege sporting events – WICSA; cocktail, wine & cheese evenings, the Annual Ball and Valedictory Dinner; inter-wing debating, sponsor child garage sale, arts week and relay for Life events.

The **Affiliate Program** was developed this year for affiliate students to join activities and tutorial offerings at College. The tutorial offerings in particular are being very well attended.

The program coordinators for the **Volunteering and Service Learning Partnerships** have been busy this semester staging events such as the Solaris Long Table dinner and the Influential Women's Breakfast.

St Catherine's Day is celebrated in November.

Graduate Women (WA) Inc AGM 2011 Minutes

Minutes of Graduate Women WA Inc Annual General Meeting Held on Tuesday 25th October 2011. Roberta Jull Common Room. St Catherine's College

1. Constitution of Meeting.

Jenni Antulov Vice President, welcomed members present and opened the meeting at 7pm.

Present: Jennifer Antulov (in the chair), Felicity Farrelly, Margaret Giles, Lynda Roberts Hall, Alison Hayden, Kerry Evans, Kathy Shellabear, Shirley Watt, M.Moss, Paula Wyndow, Dorothy Collin, Lalani Weddikara, Jenny Jones, Helen Charlesworth, Liz Flatters, Robyn Carroll, Jenny Mills, Lesley Cala, Hope Alexander, Barbara Hale, Esmeralda Rocha (22)

Apologies: Felicity Bradshaw, Barbara Taylor, Professor Jane Long, Kathy Mumford, Karen Wood, Hilary Silbert, Marcelle Brown, Evelyne Deplazes, Jasmine Lamb.

In Attendance: Kate McCallum (minuting)

2. Minutes of the 2010 Annual General Meeting

The minutes of the Annual General Meeting held on Tuesday 26th October 2010 were confirmed.

Moved: D.Collins

Seconded: F.Farrelly

Motion carried

Motion to carry name

Moved D.Collins

Seconded: F.Fareilly

Unanimous. Motion Carried.

3. Business Arising.

There was no business arising from the Minutes.

4. Reports

4.1: Presidents Report: Margaret Giles presented her annual report

Moved: J. Antulov

Seconded: A.Hayden

Carried: Unanimous

4.2: Secretary- no report

4.3: Treasurers Report (attached)

Financial statements were tabled (prepared by Somes and Cook) Presented by the Honourable Treasurer Alison Hayden.

Moved: A.Hayden

Seconded: J.Dunlop

5. Other Reports

Spoken reports spoken and presented by J.Antulov and F.Farrelly.

Moved: J.Antulov

Seconded: L.Weddikkara

Motion Carried.

6. Election of Officers and Committee for 2011/12

In the absence of Dr Margaret Giles President Jennifer Antulov declared all positions vacant, presented written nominations received to date and called for further nominations from the floor.

The following were elected by acclamation:

President: Felicity Farrelly

Vice President: Jennifer Antulov and Lalani Weddikarra

Honorary Treasurer: Alison Hayden

Assistant Treasurer: Vacant

Secretary: Vacant

Committee Members: Wendy McCallum,

Kate McCallum, (graduated in the last ten years)

Esmeralda Rocha (graduated in the last 10 years)

Two vacant positions

Newsletter Editor: Jenny Jones

Margaret Giles continues as Immediate Past President

It was recorded that two committee members are under the age of 35 at time of the meeting and both have also completed degrees in the last ten years.

Motioned: J.Antulov

After some discussion it was decided that one person could not hold two positions on Committee. Therefore Jenny Jones withdrew her nomination for position of Secretary and Margaret Giles withdrew her nomination for Assistant Treasurer.

There was discussion about having paid members on committee.

It was then agreed that positions of Assistant Treasurer and Secretary remain vacant.

7. Appointment of Auditor

On the recommendation of A. Hayden it was moved from the Chair that Somes and Cooke, Chartered Accountants, West Perth be appointed Auditor to the Association for the year 2011/2012.

Comment: L. Flatters will pass on concerns to Auditors.

Moved: A. Hayden

Seconded: L. Flatters

Carried

8. Other Matters

Robyn Carroll congratulated all committee members on their nominations.

Meeting Closed: 8:52

PRESENTATIONS

Before the start of the AGM the following presentations were made to winners of the 2011 Graduate Women (WA) Scholarship winners.

Cheques were presented to:

(1) Graduate Women (WA) Open Scholarship (\$4000). Esmeralda Rocha: PHD. UWA

(2) Mary and Elsie Stevens Scholarship (\$4000). Melissa Werrett: PHD. Curtin University

(3) Joyce Riley Scholarship (\$4000). Erin Hobbs. PHD. UWA.

(4) Jillian Bradshaw Bursary (\$4000). Rebecca Fuller. PHD. UWA

(5) Mary Walters Bursary (\$2000) Kitty Rose Foley. PHD. UWA

AFUW(WA) Inc Education Trust Annual Report

I have pleasure in presenting this Annual Report on behalf of the Trustees. The Trustees are Lyn Abbott, Jocelyne Boujos, Robyn Carroll (Chair), Dorothy Collin, Kerry Evans (Trust Secretary), Loreena Gillon and Barbara Hale.

1. Trustees and Trust Meetings

The Trustees met on 21 February and 8 August in 2012 and resolved a number of matters by email including resolutions relating to the management of fixed term deposits with Unicredit. The Committee Treasurer, Alison Hayden was invited to attend the Trust meetings as in previous years.

2. 2012 Activities

The principal concern of the Trustees during 2012 has been management of the Trust Funds. This is the first year that the Trust has needed to seek acquittals for payments from the Scholarship Fund to Scholarship recipients. It has not proved to be as straightforward as would be hoped to obtain these acquittals. Dorothy Collin has been diligently pursuing the recipients while at the same time suggesting ways to make the accountability process more effective for the coming years.

The Trustees have reviewed the recommendations from the Chair of Assessors, Dr Joan Wardrop, and have pre-approved payment of the amounts of the amounts the assessors recommend be awarded in 2012 from Trust funds, subject to the Committee accepting the Assessors' recommendations.

Jocelyn Boujos has prepared a Deed of Amendment to effect a change of name of the Education Trust from AFUW (WA) Inc Education Trust to Graduate Women (WA) Education Trust. The Trustees will execute the amended Deed in the near future. No other formalities are required to effect this change of name.

During August the Trustees proposed to the Committee via the President Felicity Farrelly, that the Association appoint a new auditor for the 2012 audit of the Association's and Trust's accounts. After discussion and consideration of this proposal the President advised the Trustees that the Committee had resolved not to change the auditors for the 2012 audit but would take up the Trustee's suggestions for 2013.

3. Invested Funds

Copies of the Balance Sheets and Profit and Loss Statements and a summary of the financial position of the Trust Fund will be presented at the AGM.

The majority of the Bursary Fund is invested with UWA. The investment arrangements remain much the same as reported in 2011. Donations to the Scholarship Fund in 2011/2012 have been placed on term deposit with the University Credit Union.

The Trustees receive a statement annually from UWA in January that refers to the previous calendar year. There has been some improvement on the return of funds in both UWA investment pools (Long Term and Short Term). In 2011 I reported that the full extent of our losses during the global economic downturn had not been regained. The position remains the much the same in 2012. As in 2011, funds invested in the University Credit Union remain capital stable.

4. Payment of Bursaries in 2012

The Trustees met in February to review the Trust investments and income and resolved to recommend to the Members that funds be made available to provide for payment of the Jill Bradshaw Bursary to be paid (from the Bursary Fund) and four Scholarships to be paid (from the Scholarship Fund).

The Trustees recommended that GW(WA) advertise Bursaries up to the following amounts from the Education Trust Bursary Fund:

Jill Bradshaw Bursary	\$4000
-----------------------	--------

The Trustees recommended that GW(WA) advertise Scholarships up to the following amounts from the Education Trust Scholarship Fund

GW(WA) Foundation Scholarship	\$5,000
Mary Walters Scholarship	\$4,000
Joyce Riley Scholarship	\$4,000
Mary and Elsie Steven Scholarship	\$4,000

The actual amounts recommended by the assessors to be awarded (to be confirmed as at 26 September 2012):

Jill Bradshaw Bursary	\$4,000
GW(WA) Foundation Scholarship	\$4,388
Mary Walters Scholarship	\$4,000
Joyce Riley Scholarship	\$1,950
Mary and Elsie Steven Scholarship	\$4,000

5. Bursaries and Scholarships in 2013

The Trustees will present their recommendations as to the amounts available for payment of bursaries and scholarships to the Members at a meeting in February or March when information from UWA about our invested funds is at hand.

At their meeting on 8 August 2012 the Trustees resolved to recommend to the Committee and to the Members that the Leah Jane Cohen be advertised in 2013.

6. Future Management of the Scholarship Fund and the Bursary Fund

The Scholarship Fund was created as a separate fund within the Education Trust. Funds received by the Trustees for disbursement from the Scholarship Fund are accounted for separately from the funds held in the original Education Trust fund (which we now refer to as the Bursary Fund). The funds held for the Leah Jane Cohen Scholarship are to be paid for purposes specific to the bequest of those funds. The Bursary Funds are not subject to the same restrictions as the Scholarship Funds. However, donations to the Bursary Funds are not tax deductible. In 2010, 2011 and 2012 funds generated by Academic dress hire have been paid into the tax deductible Scholarship Fund only. The Trustees remain of the view that consideration needs to be given by Members as to ways to maintain some of the original bursaries within the changed environment of the Trust.

As stated in my Report last year, there are clear advantages to retaining the Bursary Fund. We can continue to offer the original Bursaries which are available to a wider category of women and for broader purposes than is allowed under the ATO requirements for use of the Scholarship Funds.

At this stage, the Trustees expect that to be able to recommend in 2013 that GW(WA) offer a similar combination of bursaries and scholarships from the Bursary Fund and the Scholarship Fund as were offered in 2012.

7. Trustee appointments

The Trustees are planning to nominate Ms Brenda Robbins and Ms Robin Adamson for appointment to the Trust. We anticipate a net increase in the number of Trustees in 2012. This will ensure a smooth transition in 2013 during which a number of current Trustees plan to retire. Any further nominations and any retirements will be advised at the AGM on 23 October.

At the date of writing this Report Lyn Abbott, Jocelyne Boujos, Robyn Carroll, Dorothy Collin, Kerry Evans, and Loreena Gillon have confirmed that they are willing to continue as Trustees in 2012/2013.

Professor Robyn Carroll
Chair AFUW(WA) Inc. Education Trust
26 September, 2012

AFUW(WA) Inc Education AGM 2011 Minutes

Minutes of the AFUW(WA) Inc Education Trust Annual General Meeting held on Tuesday 25 October 2011 at St Catherine's College.

Present: Robyn Carroll (in the Chair) Jennifer Antulov, Felicity Farrelly, Margaret Giles, Lynda Roberts Hall, Alison Hayden, Kerry Evans, Kathy Shellabear, Shirley Watt, M.Moss, Paula Wyndow, Dorothy Collin, Lalani Weddikara, Jenny Jones, Helen Charlesworth, Liz Flatters, Jenny Mills, Lesley Cala, Hope Alexander, Barbara Hale, Esmeralda Rocha (22)

Apologies: Felicity Bradshaw, Barbara Taylor, Professor Jane Long, Kathy Mumford, Karen Wood, Hilary Silbert, Marcelle Brown, Evelyne Deplazes, Jasmine Lamb.

1. Welcome

Members were welcomed to the Trust meeting by the Chair, Professor Robyn Carroll.

2. Minutes of 2010 Annual General Meeting held on 26th October 2010 had been circulated.

3. Confirmation of Minutes

3.1 The Minutes of the 2010 Annual General Meeting were confirmed.

3.2 Matters Arising from the Minutes

The motion passed at the meeting to change the time that the Trustees advise the Association what funds are available for the payment of Scholarships and Bursaries to March each year was noted.

4. Reports

4.1 Trustees' Report

The Chair spoke briefly to the Trustees' report. The full report as circulated read as follows:

1. Trustees and Trust Meetings

The Trustees have met twice since the 2010 AGM and have resolved a number of matters by email including resolutions relating to the management of fixed term deposits with Unicredit. Meetings were held on 15 February and 30 August. The Committee Treasurer, Alison Hayden was invited to the Trust meetings as in the previous year.

Each of the Trustees has indicated that they are willing to continue as trustees for the coming year.

2. 2011 Activities

The principal activities of 2011 have related to management of the Trust Funds, though with less intensity this year now that the changes brought about by the Scholarship Fund are settling into place. Other activities have included:

- a. investigating the best way to manage the Trust Funds in the aftermath of the global economic downturn. This has involved discussions with UWA financial services staff;
- b. considering the capacity of the Trust to pay bursaries and scholarships in 2012 and future years; and
- c. continuing to consider how the Trust funds might be structured and managed in the coming years now that we have a separate Scholarship Fund and a Bursary Fund.

3. Invested Funds

Copies of the Balance Sheets and Profit and Loss Statements and a summary of the financial position of the Trust Fund will be available at the AGM.

The majority of the Bursary Funds are invested with UWA. The investment arrangements remain much the same as reported in 2010. Subsequent to the global economic downturn donations to the Bursary Fund and to the Scholarship Fund have been placed on term deposit with the University Credit Union in accordance with advice received from Financial Services, UWA.

The Trustees receive a statement annually from UWA in January that refers to the previous calendar year. There has been some improvement on the return of funds in both UWA investment pools (Long Term and Short Term) but the full extent of our losses during the global economic downturn had not been regained. Funds invested in the University Credit Union are capital stable.

4. Payment of Bursaries in 2011

The Trustees met in February to review the Trust investments and income and resolved to recommend to the Members that funds be made available to provide for 2 Bursaries to be paid (from the Bursary Fund) and 3 Scholarships to be paid (from the Scholarship Fund). The names of the Scholarships reflect the Associations' new name and retain the names of the women in whose memory the original Bursaries were established.

In 2011 GW(WA) advertised and awarded Bursaries up to the following amounts from the Education Trust Bursary Fund

Mary Walters Bursary	\$4000
Jill Bradshaw Bursary	\$4000

In 2011 GW(WA) advertised and awarded Scholarships up to the following amounts from the Education Trust Scholarship Fund

GW(WA) Foundation Scholarship	\$5,000
Joyce Riley Scholarship	\$4,000
Mary and Elsie Steven Scholarship	\$4,000

The actual amounts recommended by the assessors to be awarded were

Mary Walters Bursary	\$2,000
Jill Bradshaw Bursary	\$4,000
GW(WA) Foundation Scholarship	\$4,000
Joyce Riley Scholarship	\$4,000
Mary and Elsie Steven Scholarship	\$4,000

5. Bursaries and Scholarships in 2012

Members may recall that the Trustees recommended to the Members that they be permitted to present their recommendations as to the payment for bursaries and scholarships to the Members at a meeting in February or March when information from UWA about our invested funds is at hand. The Trustees consider that this arrangement worked well in 2011 and recommend that it continue.

6. Future Management of the Scholarship Fund and the Bursary Fund

The new Scholarship Fund was created as a separate fund within the Education Trust. Funds received by the Trustees for disbursement from the Scholarship Fund are accounted for separately from the funds held in the original Education Trust fund (which we now refer to as the Bursary Fund). Other than the Leah Jane Cohen Fund which is payable for purposes specific to that bequest, the Bursary Funds are not subject to the same restrictions as the Scholarship Funds. However, donations to the Bursary Funds are not tax deductible. In 2010 and 2011 funds generated by Academic dress hire have been paid only into the tax deductible Scholarship Fund. The Trustees are of the view that further consideration is required as to ways to maintain some of the original bursaries within the changed environment of the Trust.

There are clear advantages to retaining the Bursary Fund. We can continue to offer the original Bursaries which are available to a wider category of women and for broader purposes than is allowed under the ATO requirements for use of the Scholarship Funds.

The Trustees expect that to be able to recommend that in 2012 GW(WA) offer a similar combination of bursaries and scholarships from the Bursary Fund and the Scholarship Fund as were offered in 2011.

7. Name Change of the Association – implications for the Education Trust

The Trustees are seeking advice on the necessary steps to bring the Education Trust Deed into line with the amendments to the name of the Association from AFUW(WA) to GW(WA).

4.2 Auditor's Report

Copies of the Balance Sheets and Profit and Loss Statements and a summary of the financial position of the Trust Fund were circulated.

Dr Dorothy Collin spoke to the documents, noting the following points:

The decision to invest funds in the UWA short and long term pools had been a good one when it was taken, but did not take account of the risks to capital invested for growth, the Long Term Pool, consequent upon events such as the global financial crisis. Capital losses made are unlikely to be recovered; recovery in the market will be recovery from a low base. Therefore there is a need to continue donating to funds, particularly those of bursaries even though those donations are not tax deductible.

In relation to the Profit and Loss statement for the Bursaries Fund, interest received (as expressed by UWA), is capital recovery and does not mean that the Trust actually received \$10,000 in interest. The interest currently being earned on Unicredit term deposits is approximately at the same rate as that received on money invested in UWA's Short Term Pool.

Moved from the Chair: That the Report of the Trustees be accepted.

Carried.

Moved from the Chair: That the Report of the Auditor be accepted.

Carried.

5. Trustee appointments

The Chair confirmed that the following Trustees were willing to continue appointment for 2012: Lyn Abbott, Jocelyne Boujos, Robyn Carroll (Chair), Dorothy Collin, Kerry Evans (Trust Secretary), Loreena Gillon and Barbara Hale.

In response to a question about the term of office for Trustees the Chair replied that the Trust Deed provided for 3 year terms. Advice has been received from the UWA solicitor that Trustees can continue to nominate without restriction.

6. Thanks and Close

The Chair thanked the GW(WA) President, Margaret Giles, and the Committee for their support during the years. Thanks were also expressed to Karen Bothwell and Kate McCallum and to the Trustees.

The meeting closed at 8.15 pm.



NOMINATION
FOR
GRADUATE WOMEN (WA) INC COMMITTEE 2012/2013

Nominations or expressions of interest for persons interested in joining Graduate Women (WA) Inc Committee are called for, with all positions being for a one year term.

The following positions are available for nomination:

President, Two (2) Vice-Presidents, Secretary, Assistant Secretary, Treasurer, Newsletter Editor and Five (5) General Committee Members (one of whom has graduated in the last 10 years)

Existing members of Committee are eligible for re-election.
Ideally all committee members should have computer access.

Committee members can contribute by:

- attending Committee meetings that are held monthly and are usually 2 hours in length
- contributing on average 6-8 hours a month on Graduate Women (WA) Inc matters

If you would like to be more involved and are interested in joining the Committee please fill out the nomination form below and return to the office by Friday 19th October 2012.

You are welcome to email the nomination form to: gwwa@westnet.com.au ; or fax it to 9386 3570

NOMINATION FOR GRADUATE WOMEN (WA) IN COMMITTEE 2012/2013

I wish to nominate for the following position/s:

Please underline position you are willing to undertake.

President / Vice-Presidents (2) / Secretary / Assistant Secretary / Treasurer /

Newsletter Editor / General Committee Member (5 positions)

Name: _____

Address: _____

Phone/fax: _____

Email: _____

Signature: _____

The Graduate Women (WA) Inc Office is at:

4 Park Road, Nedlands 6009

Ph/Fax: (08) 9386 3570

Email: gwwa@westnet.com.au

Postal address: P O Box 48 NEDLANDS WA 6909

Order of Proceedings

Tuesday, 23rd October 2012

Graduate Women (WA) Inc. Annual General Meeting Agenda

1. Constitution of Meeting and apologies
2. Confirmation of the Minutes of the 2011 Annual General Meeting
3. Business Arising
4. Reports
 - 4.1. President
 - 4.2. Secretary
 - 4.3. Treasurer – report and acceptance of Audited Financial Statements – to be tabled at the meeting
5. Other reports
6. Election of Officers and Committee for 2012/13
7. Appointment of Auditors
8. Other matters
9. Thanks and Close

AFUW(WA) Inc Education Trust Annual General Meeting Agenda

1. Welcome
2. Minutes of 2011 Annual General Meeting held on 25th October 2011
3. Confirmation of Minutes
4. Business Arising from Minutes
5. Reports
 - 5.1. Chair of Trust's Report
 - 5.2. Auditor's Report
6. Trustee appointments
7. Any other business
8. Thanks and Close

Followed by:

Presentations

Presentations to Bursary and Scholarship Winners, 2011